



SC Scoop

Shorecrest PTSA Shorecrest High School 15343 – 25th Ave. NE Shoreline, 98155 (phone 206-361-4286)

Volume 16, Issue 10

<http://www.shorecrestptsa.org>

Jan. 24 – Feb. 7, 2010

Deadline for the next SCOOP is Feb 1, for issue covering Feb. 7-28, to scoop.editor@shorecrestptsa.org

MARK YOUR CALENDAR



- Jan. 21 Tammy the Hypnotist, SC Theater, 7 pm.
- Jan. 23 Embrace Shorecrest Grounds clean-up, 10am - 2pm, meet at SC front steps
- Jan. 23 AVID Garage Sale – 8 – 3 - 175th and Meridian
- Jan. 23 Jazz It Up! SC theatre, 7:30 pm
- Jan. 28 and 29 **F I N A L S; early dismissal**
- Jan. 31 College Goal Sunday, FAFSA help, 2 – 4 pm, library
- Feb. 1 NO SCHOOL**
- Feb. 3 Boosters Meeting, 7 pm, library
- Feb. 4 Concert – Jazz Band, Stage Band, Kellogg Jazz Band 7:30, SC Theatre
- Feb. 5 TATTOO Coffeehouse, 7 pm
- Feb. 6 scBoosters Dueling Decades Dance, 7 – midnight, Kenmore Community Club
- Feb. 9 ELECTION – Mail Your Ballots!
- Feb. 9 PTSA, 7 pm, library
- Feb. 9 – Concert – Wind Ensemble, Symphonic Band, Freshman Band, 7:30, SC Theatre
- Feb. 15 – 19 Mid-Winter Break

Jan. 28 & 29 are Red Zone days – please do not plan appointments requiring an absence or tardy.

Tammy the Hypnotist – Comedy, Family Fun, and your friends Under Tammy's Spell...for PTSA fundraising for classroom grants, Spree, Embrace Shorecrest, Writers in the Schools, and much more. Thursday, Jan. 21 at 7.



EMBRACE SHORECREST Winter clean-ups are Jan. 23 and Feb.27, 10 – 2. Earn Community Service hours, beautify Shorecrest – rain or shine – bring gardening tools! Enjoy treats! Q's call 206-363-1542.

In District REFLECTIONS reviews, Shorecrest had six finalists and four honorable mentions. Congratulations! Finalists' entries will continue to state evaluations. "Together We Can" is PTA's 2010-2011 national Reflections theme.

THANK YOU to everyone who Dined Out at Canyon's for Spree scholarship funds and Boosters; WORKS workers on Shorecrest's volunteer night; levy supporters.



VOTE YES FOR SHORELINE SCHOOLS

- ❖ **PTSA has pledged \$500 for support of the Levy/bond proposals set for a February 9 special election. Here's How YOU Can Help:**

1) RAH-RAH SIGN WAVING:

Friday, Jan. 22, and Feb. 8 or 9, 6:30-8:30 AM & 4-6 PM

A) at Lake City Way/N.E. 145th Street (aka McDonalds/Taco Bell)

B) at North City - 15th Ave. N.E. and N.E. 175th St (aka Walgreen's).

Staff, students and parents are invited to show up for a one- or two-hour shift. Students can earn community service. Parents are especially needed from 7:30-8:30 a.m. Signs will be provided. Contact Jim Talbot at talbotjs@msn.com or 365-3863.

2) PHONING:

Wed., Feb. 3, 6-7 pm. at LFP Windermere near Third Place Books. SC parent night. Bring your cell phone. "Just calling to remind you to **mail in your ballot**," is the message, and scripts are provided.

3) MAIL- ONLY voting – MAIL your ballot – There are NO boxes in Shoreline/LFP for this election.

OFFER to mail a senior citizen's or shut-in's ballot!



- ❖ **FACTS: Three proposals**, (1) replacing an expiring levy; (2) a bond for the modernization/replacement of the 2 high schools; (3) a 4-year capital levy for technology support. If all three proposals are approved, the estimated new combined levy and bond rate in 2011 and 2012 would be \$5.25 per \$1,000 of assessed value, and a stable \$5.15 in the years following. Current 2010 rates are \$5.29 per \$1,000, representing no change to the average taxpayer.

VOTE!

<http://www.shorelineschools.org> for info



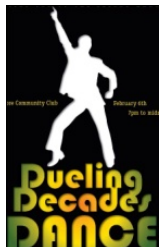
JUST BECAUSE WE LOVE YOU! Valentine's Day is coming – so it's time again to show our kids just how much we love them. We are looking for people to donate 2 -4 dozen cupcakes, either home made or store made, so EVERY student gets a cupcake on Feb. 12 during TAP. Deliver the cupcakes to the main office by 9am on Friday, Feb. 12. We have approximately 1600 students! To donate and/or help set up and pass out cupcakes, email Maureen Robertson at lmktdrobertson@hotmail.com or Cheryl Brady at cherylannb@comcast.net. Thank you!!

MORE NEWS....

- ❖ **Jazz It Up!** the Shoreline-LFP Arts Council's annual fundraiser for arts scholarships, is Saturday, Jan. 23 at 7:30 in the SC theatre, with jazz sax player Jeff Kashiwa, the District Friends and Faculty All Star Big Band, plus Shoreline's middle and HS jazz bands. Tickets are \$18; \$15 for students and seniors, at www.shorelinearts.net
- ❖ **Seniors and Parents - get help filling out the FAFSA**, the form required for financial assistance for both community and four-year colleges. Come to College Goal Sunday Jan. 31 from 2-4 pm. Bring your 2008 tax forms, and any available 2009 information. Seniors will get details in Senior Connections classes, or Contact Jenny Breed in the Counseling Center for info or to volunteer to assist parents that day.
- ❖ **ALL brands** of inkjet cartridges can be recycled (but no laser cartridges, please.) for PTSA profit. Drop them in the box in the Main Office.
- ❖ **The Unity Festival**, Shorecrest's annual celebration of diversity, is March 2. Ideas, participation and help are welcome as the event is planned. Contact Anita Sena-Johnson in E-4 or Dottie Sala-Wilson in E-5.

MORE NEWS...

- ❖ **Friends of Third Place Commons** Annual Breakfast is Thursday, Feb 11, 7 – 8:30 am. Tickets are \$40, at Third Place Books, to say thanks for the safe environment for kids and families to meet, study, and “hang out.”
- ❖ **National Honor Society** applications will be mailed home around Feb. 8 – 12 to sophomore- seniors who after first semester have a 3.5 cumulative GPA. Previously, a 3.7 GPA was required and students had to pick up applications. A workshop Feb. 24, 2:30- 3 pm, is not mandatory but will provide suggestions for a successful application. Apps are due in C-10 on March 8 by 2:30.
- ❖ **Bring new toys** to basketball games Jan. 27, 29 and Feb.5, 11 for Children’s Hospital patients, Katie Rice’s senior project. Pagliacci Pizza on Ballinger will also accept toys.



Get your dancing shoes ready! Adults are invited to the scBoosters **Duelling Decades Dance February 6** at the Kenmore Community Club, 7 pm to midnight. Request music from your favorite decade and dance the night away! Proceeds raise \$\$ for SC sports, clubs and activities. Details at www.scboosters.org.

Get your RUNNING (or WALKING) Shoes ready, too!
Mark your calendar now for the 2nd **SCOT TROT** and **Dash-n-Dine Pancake Breakfast MARCH 20.**



SC DAILY SCHEDULE: (A = 1-TAP-3-Lunch-5; B = 2-TAP-4-Lunch-6; C = 1-2-TAP-3-4-Lunch-5-6)

	Monday	Tuesday	Wednesday	Thursday	Friday
Jan 24-30	Jan 25 C	Jan 26 B	Jan 27 A	Jan 28 <i>Red Zone</i> Special B <i>12:05 Release</i>	Jan 29 <i>Red Zone</i> Special A <i>12:05 Release</i>
Jan 31- Feb 6	Feb 1 <i>Non student workday</i>	Feb 2 C	Feb 3 Yellow C	Feb 4 B	Feb 5 A

	Date	Day	Who	Opponent	Where	When		
Boys B-Ball	1/26	Tue	F	Lynnwood High	Lynnwood High	3:45		
			JV	Lynnwood High	Lynnwood High	5:40		
			V	Lynnwood High	Lynnwood High	7:30		
	1/29	Fri	F	Henry M. Jackson	Shorecrest	3:45		
			JV	Henry M. Jackson	Shorecrest	5:40		
			V	Henry M. Jackson	Shorecrest	7:30		
	2/2	Tue	F	Meadowdale High	Shorecrest	3:45		
			JV	Meadowdale High	Shorecrest	5:40		
			V	Meadowdale High	Shorecrest	7:30		
2/5	Fri	F	Mt. Lk. Terrace High	Mt. Lk. Terrace High	3:45			
		JV	Mt. Lk. Terrace High	Mt. Lk. Terrace High	5:40			
		V	Mt. Lk. Terrace High	Mt. Lk. Terrace High	7:30			
Girls B-Ball	1/27	Wed	F	Lynnwood High	Shorecrest	3:45		
			JV	Lynnwood High	Shorecrest	5:40		
			V	Lynnwood High	Shorecrest	7:30		
	1/29	Fri	F	Henry M. Jackson	Henry M. Jackson	3:45		
			JV	Henry M. Jackson	Henry M. Jackson	5:40		
			V	Henry M. Jackson	Henry M. Jackson	7:30		
	1/30	Sat	V	Mt. Lk. Terrace High	Mt. Lk. Terrace High	3:30		
			2/3	Wed	F	Meadowdale High	Meadowdale High	3:45
					JV	Meadowdale High	Meadowdale High	5:40
2/5	Fri	V	Meadowdale High	Meadowdale High	7:30			
		2/5	Fri	F	Mt. Lk. Terrace High	Shorecrest	3:45	
				JV	Mt. Lk. Terrace High	Shorecrest	5:40	
2/5	Fri	V	Mt. Lk. Terrace High	Shorecrest	7:30			
		2/6	Sat	V	Shoreline Cup/ Sub-Regional's	Cascade Elite Gymnastics	4:00	
				2/6	Sat	V	Shorewood	Shoreline Pool
Boys Swim	1/28	Thur	V	Last Chance Invitational	TBA	TBA		
	2/4	Thur	V	Last Chance Invitational	TBA	TBA		
Co-Ed Wrestling	1/28	Thur	JV	Glacier Peak High	Shorecrest	5:45		
			V	Glacier Peak High	Shorecrest	7:00		
	2/5	Fri	V	3A Sub-Regional's	Everett High	4:00		
			2/6	Sat	V	3A Sub-Regional's	Everett High	10:00